

Number  
CPC 1



## RACE BULLETIN

**Club: British Powerboat Racing Club**

**Event: Cowes-Poole-Cowes Powerboat Race**

**Time: 13:00**

**Date: 21 August 2017**

---

**This Bulletin is issued to amend Race Instructions for the Cowes-Poole-Cowes race:**

### **FRONT PAGE**

The Cowes-Poole-Cowes race will be a Club Class race only.

### **Section 4. ORGANISING COMMITTEE, RACE OFFICIALS AND MANAGEMENT TEAM**

Caroline Cheer will be Timekeeper in Cowes

Mark Turner will be Medical Officer in Cowes

Max Gibson will be Assistant Marshal in Cowes

### **Section 8. PIT AREAS, PARKING AND SPECIAL CONDITIONS**

Competitors are reminded that smoking is prohibited in the dry and wet pits; and the launching area. This includes electronic cigarettes.

### **Section 10. LAUNCHING**

Availability of the crane in Cowes has changed on Sunday. It will be operating between 10:00 to 18:30. (There is no change to its availability on Saturday which will be 09:00 to 17:00).

### **Section 11. OFFICIAL PRACTICE AND TESTING ARRANGEMENTS**

Details for the testing arrangements on Saturday afternoon are shown in Appendix 1.

### **YB TRACKERS**

Trackers supplied by YB Tracking Ltd will be issued to competitors and need to be returned at the end of the race. Any competitor who does not return to Cowes at the end of the race must arrange for the tracker to be posted/delivered to YB Tracking Ltd by no later than 1 September. Address is: YB Tracking Ltd., Unit 2, Eastlands Boatyard, Coal Park Lane, Swanwick, Southampton SO31 7GW.

A handwritten signature in blue ink that reads 'Rob Andrews'.

**Rob Andrews**  
**Officer of the Day**

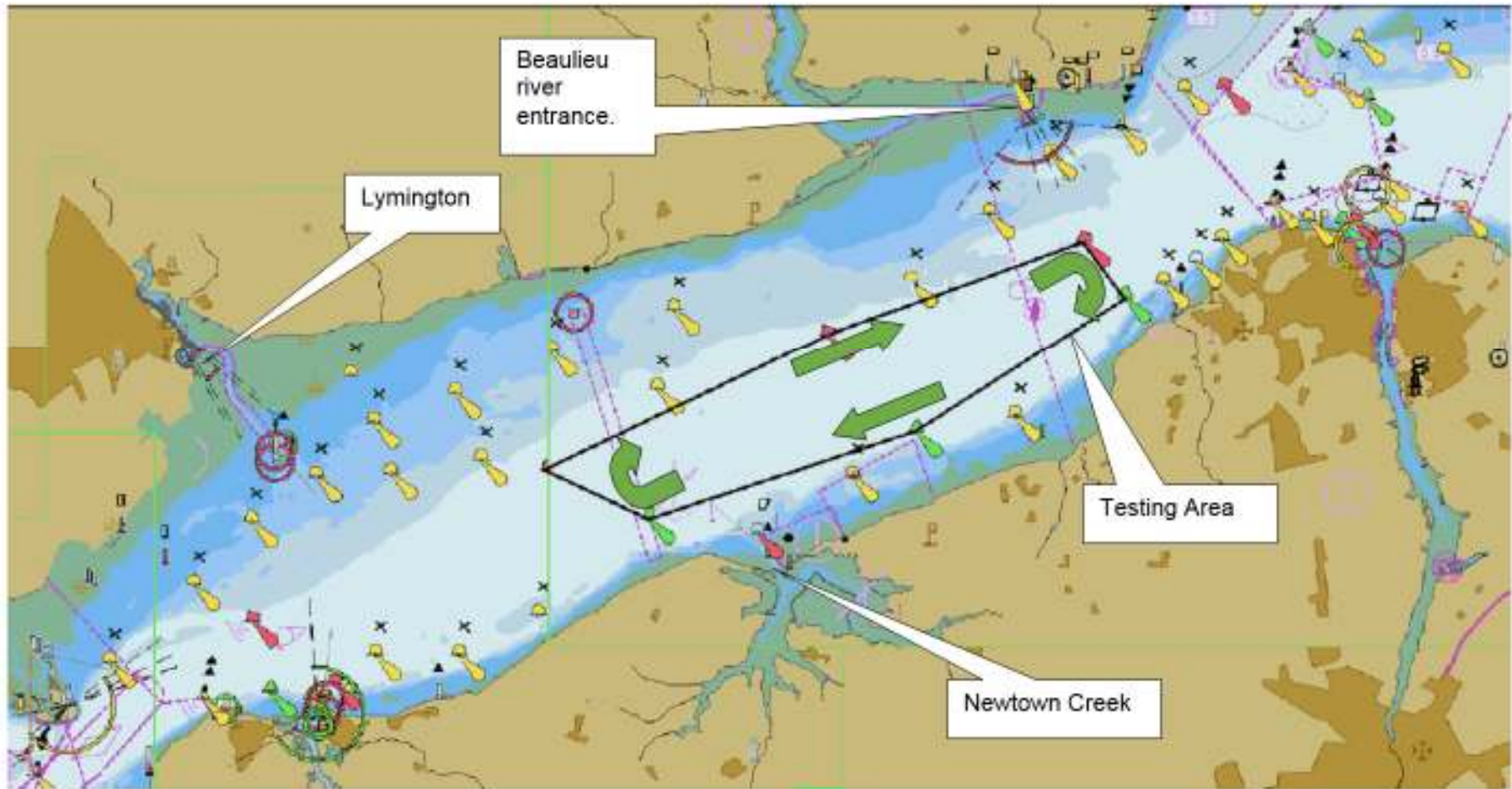
## Appendix 1 to Cowes-Poole-Cowes Race Instructions Bulletin No. CPC1

1. Before testing, the registered Driver must sign-on for testing at Race Control.
2. Testing will only be allowed within the area of the Western Solent bounded by a line connecting Solent Bank – West Lepe – East Lepe – Gurnard Ledge – Salt Mead – Hamstead Ledge – Solent Bank buoys (see attached chart). When transiting to/from the testing area, race boats must pass North of Cowes Harbour no.2 port-hand lateral buoy and the Gurnard cardinal buoy. (see Appendix 1 to this Bulletin).
3. On arrival at the Eastern limit of the testing area, Race boats must contact the Safety Officer on VHF channel 37 and await his permission to enter the area. Safety control will operate on Channel 37 throughout the testing period.
4. Once in the testing area, race boats should circulate in a clockwise direction as shown on the chart.
5. The International Rules for the Prevention of Collision at Sea must be obeyed at all times. Once on the plane, race boats must pass **at least 100m** clear of all other craft present on the water. Considerable numbers of vessels may be encountered crossing the area between the Beaulieu river entrance, Lymington and Newtown Creek.
6. Safety and patrol boats will be stationed at various points within and around the Testing area and may display the following flag signals:  
  
RED flag – testing over - race boats should come off the plane immediately and return to the Cowes Yacht Haven obeying all speed limits and precautions.  
  
YELLOW flag – hazard nearby - race boats must reduce to cruising speed until past hazard.
7. On completion of testing (and refuelling if necessary) the registered driver must immediately return to Race Control and sign-off to indicate that his boat and crew have returned safely to the pits. **FAILURE TO COMPLETE THESE FORMALITIES MAY RESULT IN DISQUALIFICATION.**

Charts showing details of the testing area and transit to/from this area are shown at Appendix 1 to this Bulletin.

Appendix 1 to Cowes-Poole-Cowes Race Instructions Bulletin No. CPC1

Chart showing Testing Area



# Chart showing route To and From Testing Area

