

Number
CTC 1



RACE BULLETIN

Club: British Powerboat Racing Club

**Event: Cowes-Torquay and Torquay-Cowes
Powerboat Races**

Time: 013:00

Date: 21 August 2017

This Bulletin is issued to amend Race Instructions for the Cowes-Torquay and Torquay-Cowes races:

FRONT PAGE:

The races will comprise Rounds 2 and 3 of the RYA National Marathon Championship

Section 1. EVENT APPROVAL

The RYA National Championship race will be run in accordance with the 2017 RYA/PB1 rules.

The UIM International Ordinary race will be run in accordance with the 2017 UIM rules, updated April and June 2017, Together with the RYA Offshore Bulletin No 2 which was issued on 17 August 2017.

Section 4. ORGANISING COMMITTEE, RACE OFFICIALS AND MANAGEMENT TEAM

Caroline Cheer will be Timekeeper in Cowes

Mark Turner will be Medical Officer in Cowes

Max Gibson will be Assistant Marshal in Cowes

Mark Cockman will carry out equipment inspection in Torquay

Section 6. RULES & REGULATIONS

Competitors and boats taking part in the UIM Ordinary Race must comply in full with UIM Rules 2017 as amended by RYA Offshore Bulletin 2 issued 17 Aug 17 together with these Race Instructions and any other instructions issued before or at Drivers' Briefings or in Race Bulletins. Competitors and boats complying with PB1/17 rules, but not in full compliance with UIM rules, may take part in the concurrent RYA National Championship race, subject to eligibility. Race Instructions and any other instructions issued before or at Drivers' Briefings or in Race Bulletins will also apply.

Section 8. PIT AREAS, PARKING AND SPECIAL CONDITIONS

Competitors are reminded that smoking is prohibited in the dry and wet pits; and the launching area. This includes electronic cigarettes.

Fuelling Arrangements: With reference to UIM Rule 504, no common fuel or supplier is specified and no fuel will be supplied by the Organisers.

Section 9. PRE-RACE SCRUTINEERING

In amplification of UIM rule 1200.5.4 and PB1 rule M8b), all 25W VHF radios are to be capable of transmitting and receiving on Channel 37 (sometimes displayed as 37A or M1) which will be the prime channel for all safety related communications.

Section 10. LAUNCHING

Availability of the crane in Cowes has changed on Sunday. It will now be operating between 10:00 to 18:30. (There is no change to its availability on Saturday which will be 09:00 to 17:00).

Section 11. OFFICIAL PRACTICE AND TESTING ARRANGEMENTS

Details for the testing arrangements on Saturday afternoon are shown in Appendix 1.

A handwritten signature in blue ink that reads "Rob Andrews". The signature is written in a cursive style with a large initial 'R'.

Rob Andrews
Officer of the Day

Appendix 1 to Cowes – Torquay – Cowes Race Instructions Bulletin No. CTC1

Section 11. OFFICIAL PRACTICE AND TESTING ARRANGEMENTS

1. Before testing, the registered Driver must sign-on for testing at Race Control.
2. Testing will only be allowed within the area of the Western Solent bounded by a line connecting Solent Bank – West Lepe – East Lepe – Gurnard Ledge – Salt Mead – Hamstead Ledge – Solent Bank buoys (see attached chart). When transiting to/from the testing area, race boats must pass North of Cowes Harbour no.2 port-hand lateral buoy and the Gurnard cardinal buoy. (see Appendix 1 to this Bulletin).
3. On arrival at the Eastern limit of the testing area, Race boats must contact the Safety Officer on VHF channel 37 and await his permission to enter the area. Safety control will operate on Channel 37 throughout the testing period.
4. Once in the testing area, race boats should circulate in a clockwise direction as shown on the chart.
5. The International Rules for the Prevention of Collision at Sea must be obeyed at all times. Once on the plane, race boats must pass **at least 100m** clear of all other craft present on the water. Considerable numbers of vessels may be encountered crossing the area between the Beaulieu river entrance, Lyminster and Newtown Creek.
6. Safety and patrol boats will be stationed at various points within and around the Testing area and may display the following flag signals:

RED flag – testing over - race boats should come off the plane immediately and return to the Cowes Yacht Haven obeying all speed limits and precautions.

YELLOW flag – hazard nearby - race boats must reduce to cruising speed until past hazard.
7. On completion of testing (and refuelling if necessary) the registered driver must immediately return to Race Control and sign-off to indicate that his boat and crew have returned safely to the pits. **FAILURE TO COMPLETE THESE FORMALITIES MAY RESULT IN DISQUALIFICATION.**

Charts showing details of the testing area and transit to/from this area are shown on the following pages.

Chart showing Testing Area

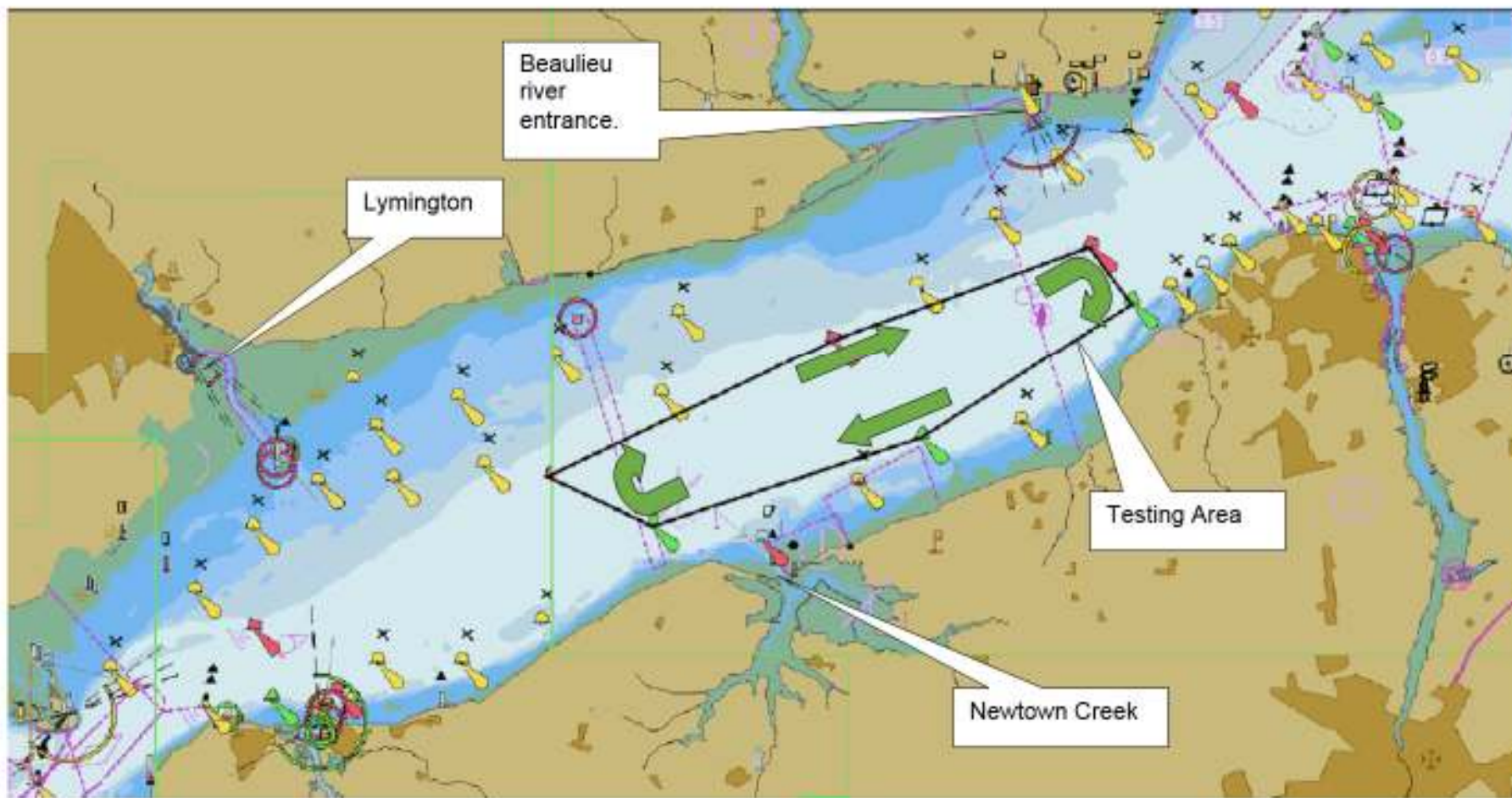


Chart showing route To and From Testing Area

